

# FLUXERGY

## How to Run a Test

### Contact Us

Email: [customerservice@fluxergy.com](mailto:customerservice@fluxergy.com)

Phone: +1-949-305-4201 x 3

[www.fluxergy.com](http://www.fluxergy.com)

\*Fluxergy's products comply with DIRECTIVE 98/79/EC OF THE EUROPEAN PARLIAMENT AND OF THE COUNCIL of 27 October 1998 on in vitro diagnostic medical devices. The devices are not endorsed or approved outside of the European Economic Area.

# Fluxergy Analyzer



\*Fluxergy's products comply with DIRECTIVE 98/79/EC OF THE EUROPEAN PARLIAMENT AND OF THE COUNCIL of 27 October 1998 on in vitro diagnostic medical devices. The devices are not endorsed or approved outside of the European Economic Area.

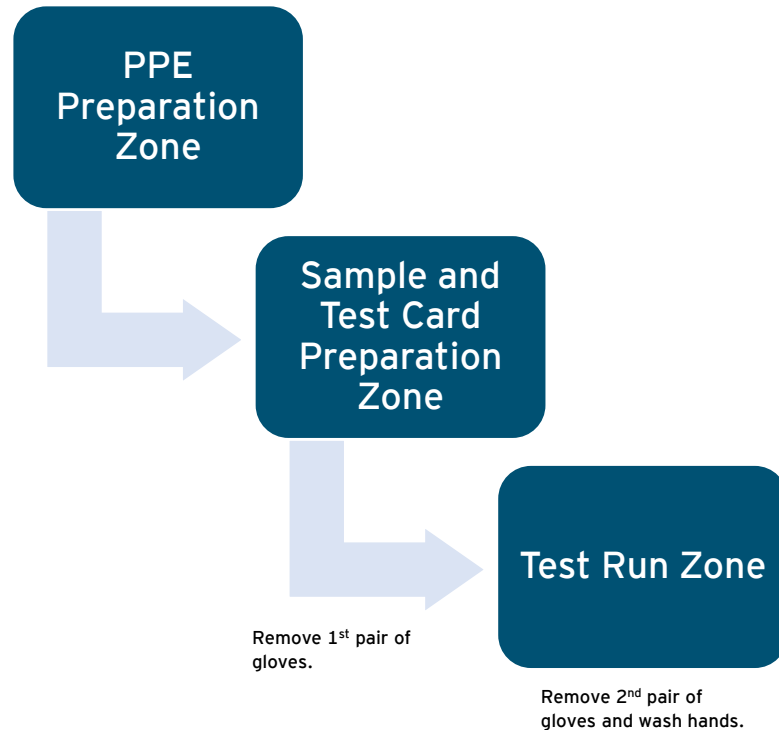
# Fluxergy Kit Contents



\*Fluxergy's products comply with DIRECTIVE 98/79/EC OF THE EUROPEAN PARLIAMENT AND OF THE COUNCIL of 27 October 1998 on in vitro diagnostic medical devices. The devices are not endorsed or approved outside of the European Economic Area.

# Reducing Contamination Risk


## Unidirectional Workflow



- The regular disinfection of your laboratory workspace is recommended to reduce the risk of contamination. The outside of the Fluxergy Analyzer can be gently wiped down with 70% isopropyl alcohol.
- Make sure to wipe down your workspace before starting the test and after the test set-up is completed. PCR only functions to detect nucleic acid from both non-viable and viable viral particles, so it is critical to routinely disinfect the testing area. However, do not spray solutions inside of the Analyzer. This will impact the sensors inside of the Analyzer.
- Your workspace should be cleaned with a 10% sodium hypochlorite (followed by sterile water to remove residual bleach), 70% ethanol, or irradiation with UV (using proper precautions for technician safety).

# Logon to Fluxergy Works




**FLUXERGY** 

**LOGIN**

User ID

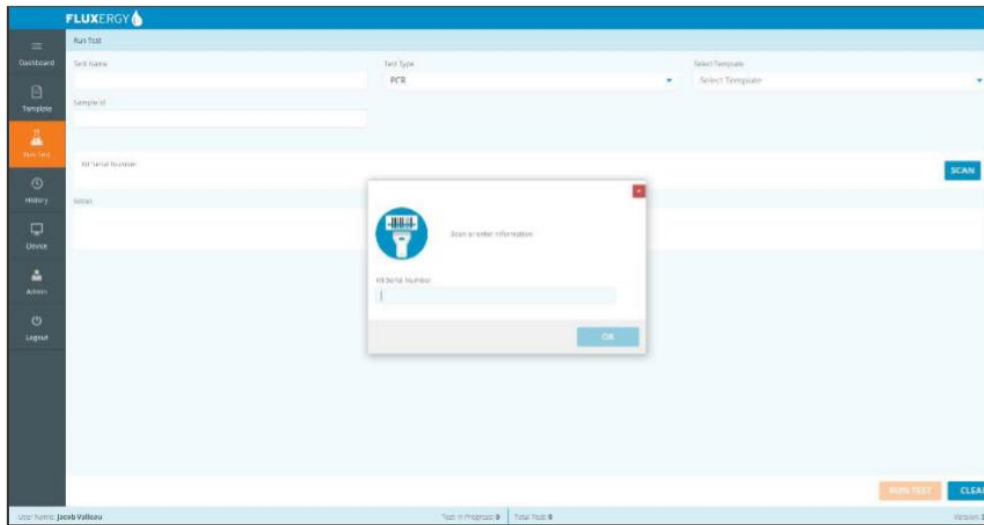
Password

**SUBMIT**

\*Fluxergy's products comply with DIRECTIVE 98/79/EC OF THE EUROPEAN PARLIAMENT AND OF THE COUNCIL of 27 October 1998 on in vitro diagnostic medical devices. The devices are not endorsed or approved outside of the European Economic Area.

# Scan Test Card Barcode



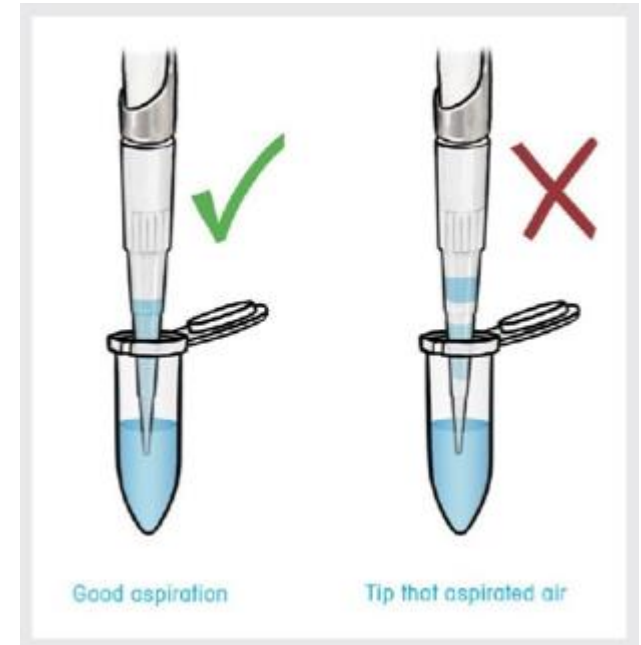
# Vortex Sample in Transport Media



- Your lab should take precautions of handling any biological specimen as potentially infectious based on your internal safety guidelines.
- We also want to note that with vortexing any sample there may be a chance of infectious aerosols and to take precautions as your lab sees fit and with the CDC guidelines in mind.
- <https://www.cdc.gov/coronavirus/2019-ncov/lab/lab-biosafety-guidelines.html>

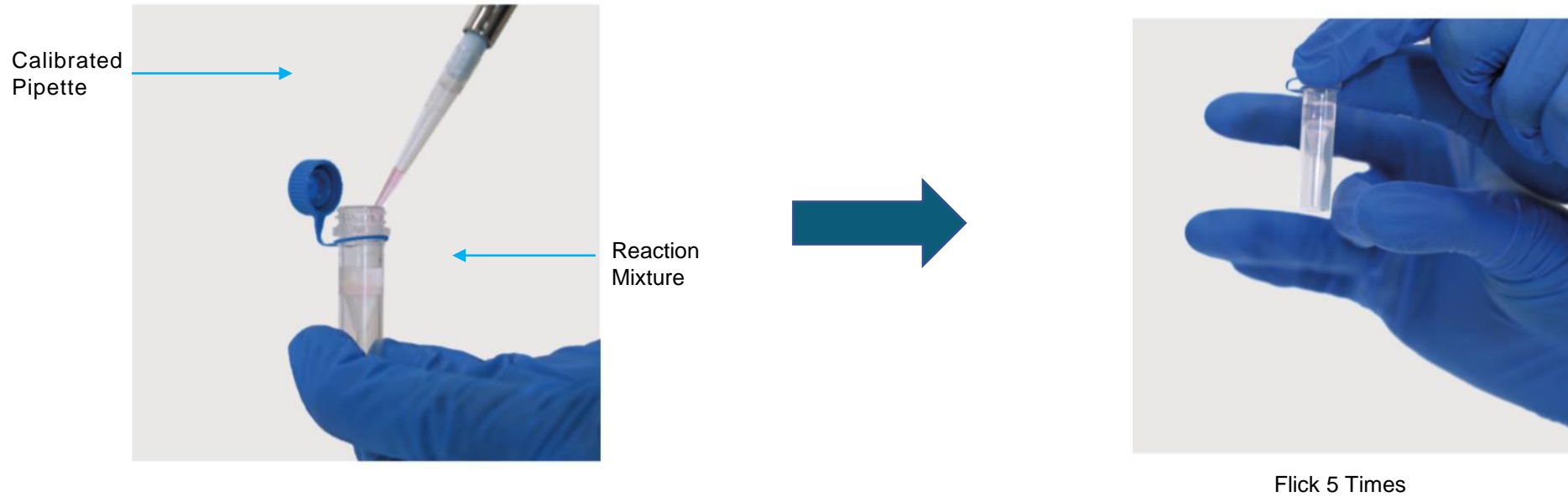
# Pipetting Techniques

- The use of pipette tips with the aerosol barrier (filtered) is recommended for preventing carryover contamination
- Only use tips once
- Pipetting slowly and carefully
- Ensure that you have pipetted the full volume whether 14uL of sample or 130uL of reaction mixture and sample
- Limited sample or reaction mixture volume can negatively affect the result
- Make sure to aspirate all 130µL from Reaction Mixture and sample tube
- Avoiding pipetting air bubbles into test card as they may adversely affect performance of microfluidics.





# Add Sample to Reaction Mixture



# Quick Spin Down of Sample + RM

- After flicking the reaction mixture and sample, it is recommended to quickly spin down the reaction mixture tube.
- Spin down for 5-10 seconds to remove any residual sample off of tube wall or cap.
- It is critical to ensure 130uL can be pipetted into loading port of test card



# Load the Test Card

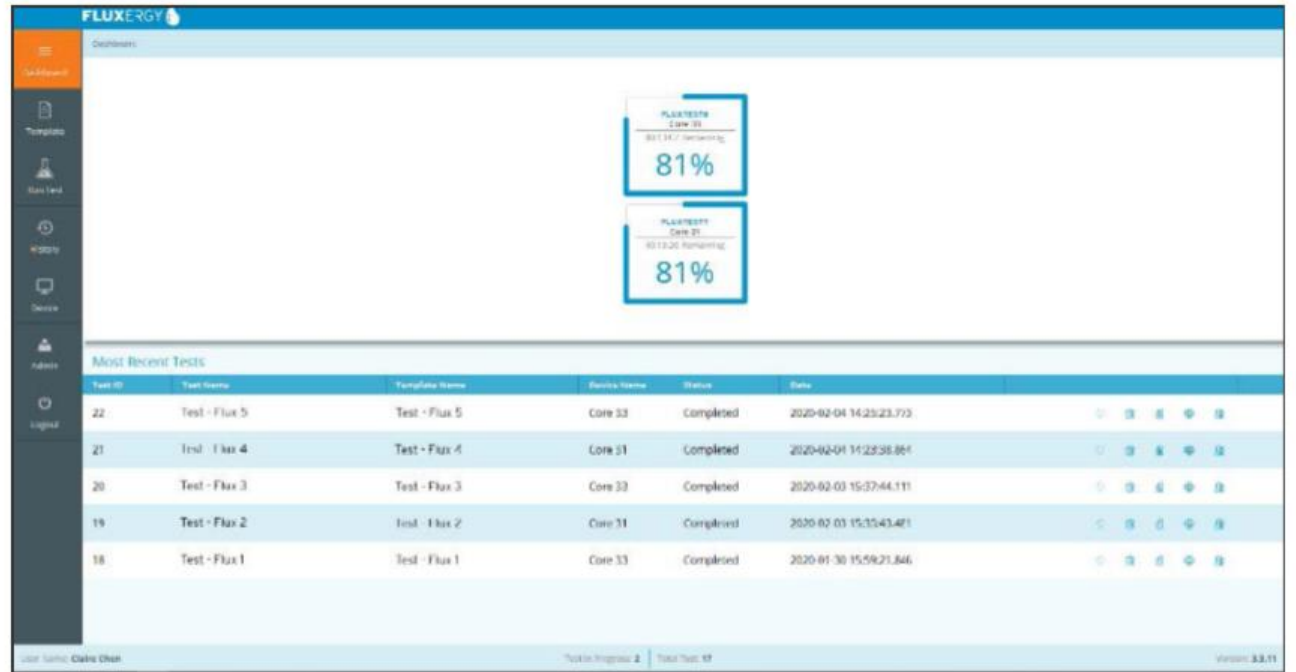


- Pipette directly onto microfluidic chip on bottom of loading port
- Do not pipette on the wall of the loading port
- The goal is to maximize sample volume into microfluidic chip

# Load the Test Card



# Run Test



\*Fluxergy's products comply with DIRECTIVE 98/79/EC OF THE EUROPEAN PARLIAMENT AND OF THE COUNCIL of 27 October 1998 on in vitro diagnostic medical devices. The devices are not endorsed or approved outside of the European Economic Area.

# Results Output- Fluxergy Works

## Summary Diagnostic

Summary-D		10023
Sample ID	10023	Start date & time of test 2020-01-27 14:38:09.744
KI serial#	200110120600000000000000	
Run by	Blab Tech	
Device name	Core 23	Device serial# MK120 000023 002— 20190604
Device firmware version	0000000	FluxWorks version 3.3.11
Notes		
SARS-CoV-2	Positive	

# Questions?

**Contact Us**

Email: [customerservice@fluxergy.com](mailto:customerservice@fluxergy.com)

Phone: +1-949-305-4201 x 3

[www.fluxergy.com](http://www.fluxergy.com)

Version Date 3/15/2021

\*Fluxergy's products comply with DIRECTIVE 98/79/EC OF THE EUROPEAN PARLIAMENT AND OF THE COUNCIL of 27 October 1998 on in vitro diagnostic medical devices. The devices are not endorsed or approved outside of the European Economic Area.